

## CALPlex Technical Note

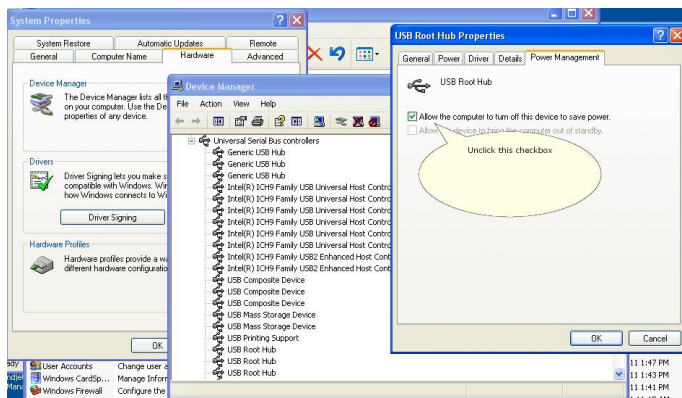
### Disable Your Computer's "USB Port Power Off" Feature

Windows includes a feature that turns the power off to USB ports on a computer after a period of time in order to save power consumption. This could possibly affect the communication of the CALPlex datalogger while collecting data and result in a "communication error" message. Therefore, we recommend you change the settings for your USB ports within Windows so they are not powered-off while using CALPlex. To do this, follow the instructions below...

#### Windows XP

- Go to Control Panel
- Select System
- Go to the Hardware tab
- Select the Device Manager
- Go to the Universal Serial Bus Controllers
- For each USB Root Hub Entries right click and select Properties
- Go to the Power Management Tab and un-click the "Allow Computer to turn off this Device to save power" check box.

(Please un-check this check box for all USB Root Hub Ports)



#### Windows 7

- Go to Control Panel
- Select System and Security
- In System section, select Device Manager
- Select "Universal Serial Bus Controllers"
- For each USB Root Hub Entries right click and select Properties
- Go to the Power Management Tab and un-click the "Allow Computer to turn off this Device to save power" check box.

(Please un-check this check box for all USB Root Hub Ports)

